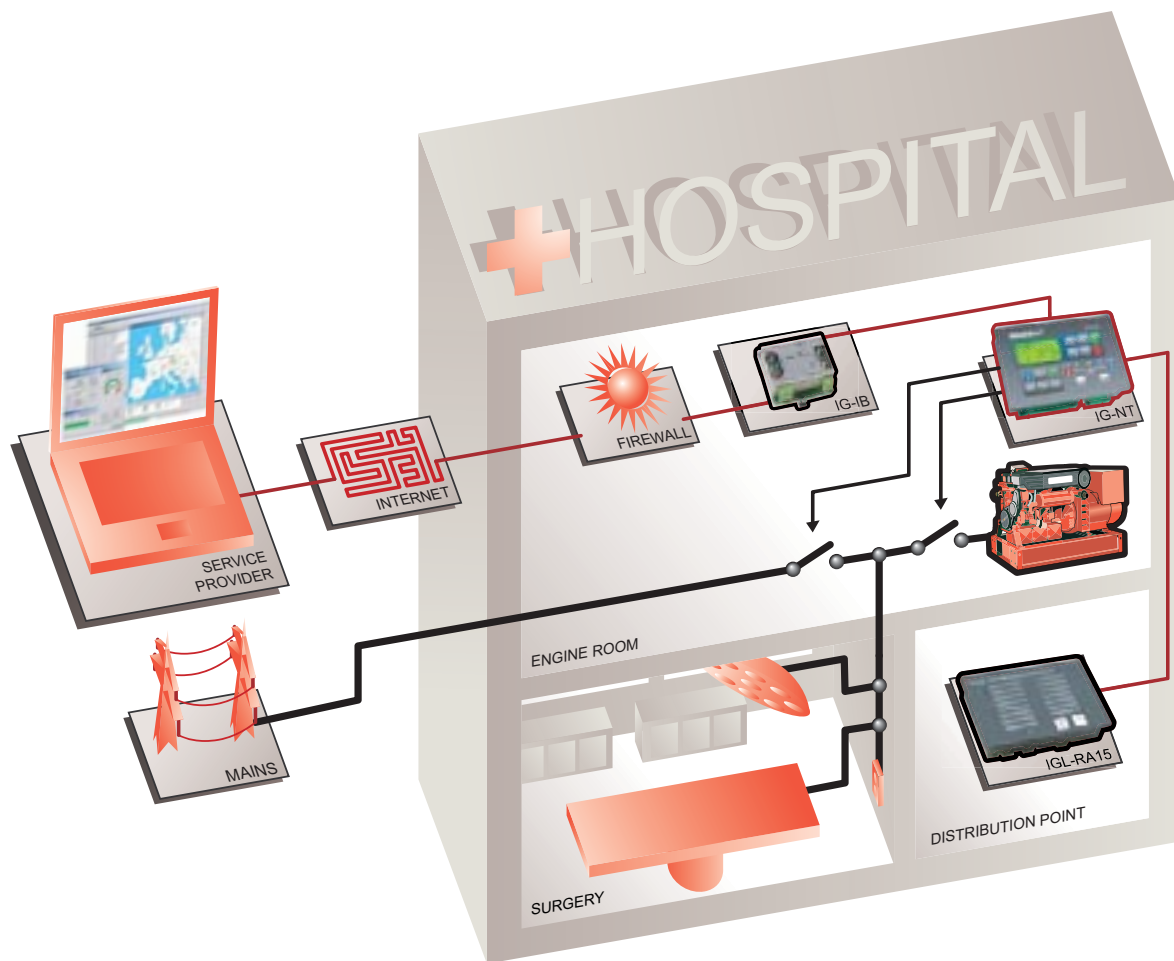


Standby system with soft return

– remote supervision
via Internet



Description

- Stand-by emergency genset accomplishes power supply to essential load during power drop.
- Controller automatically starts the genset in case of mains failure and switches load to generator. When mains returns, it synchronizes the generator back, softly unloads it and stops the engine.
- Generator automatically synchronizes to mains in Test mode. Test mode can be used to check the genset condition and to provide uninterrupted power supply in case of expected mains failure.
- Status of the genset is displayed in the distribution point.
- Service contractor connected via Internet and IntelliSupervisor PC software has complete information on status and performance of gensets. Each important alarm immediately pops-up on PC screen.
- IntelliSupervisor is used for supervision of complete fleet of gensets located on many sites.
- History file with performance log stored in IG-EE allows easy backtracking and problem solving.
- Seamless communication with engine's electronic injection control unit, all important values and alarms are visible on screen of IntelliGen and stored to the history file in plain language.

Scope of supply:

- 1× IG-NT
- 1× IG-AVRi + IG-AVRi-TRANS/LV
- 1× IG-IB

**STANDBY SYSTEM
WITH SOFT
RETURN – REMOTE
SUPERVISION VIA
INTERNET**